

1-35

Willow Spring Land Company

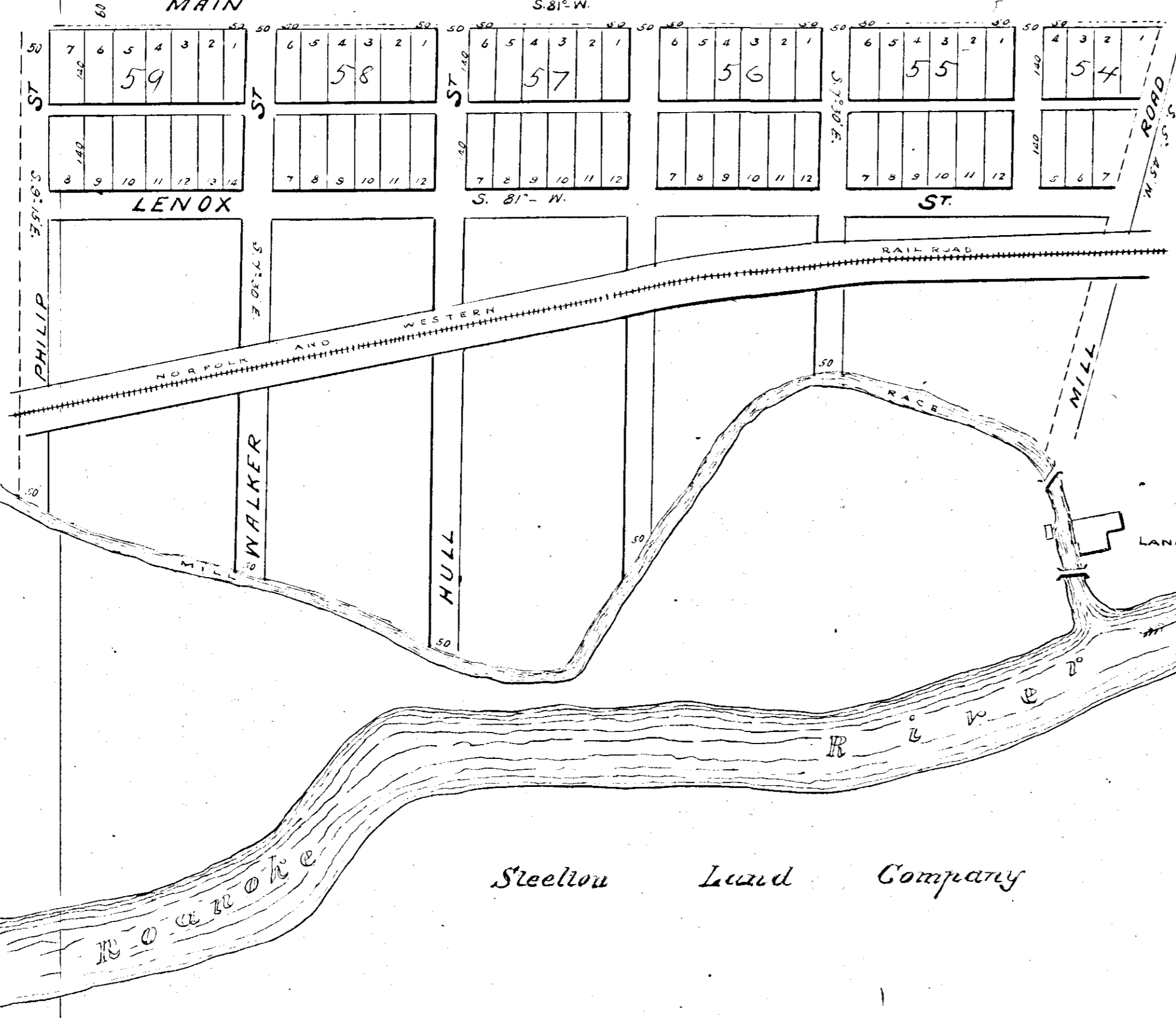
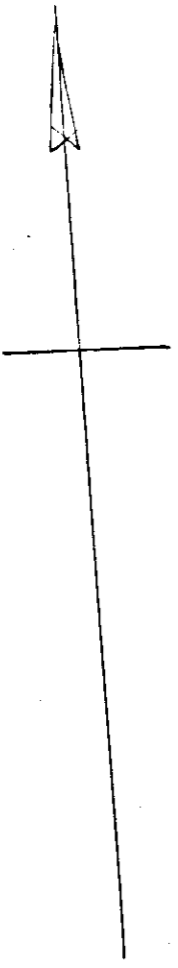
DIXIE LAND COMPANY

SALEM VA:

Scale 0 1 2 3 4 5 6 7 8

J.C. Loughorne President

L. Chandler Engineer



PHILADELPHIA BRICK CO.

CITY RESERVOIR
LAKE SPRING HOTEL

Steelton Land Company

This tracing made December 3rd 1927
from original Blue Print
filed in the office of the Clerk of the
Circuit Court of Roanoke County at
Salem, Virginia.
Made by Wm. Palmer
Checked by T. H. Hillman