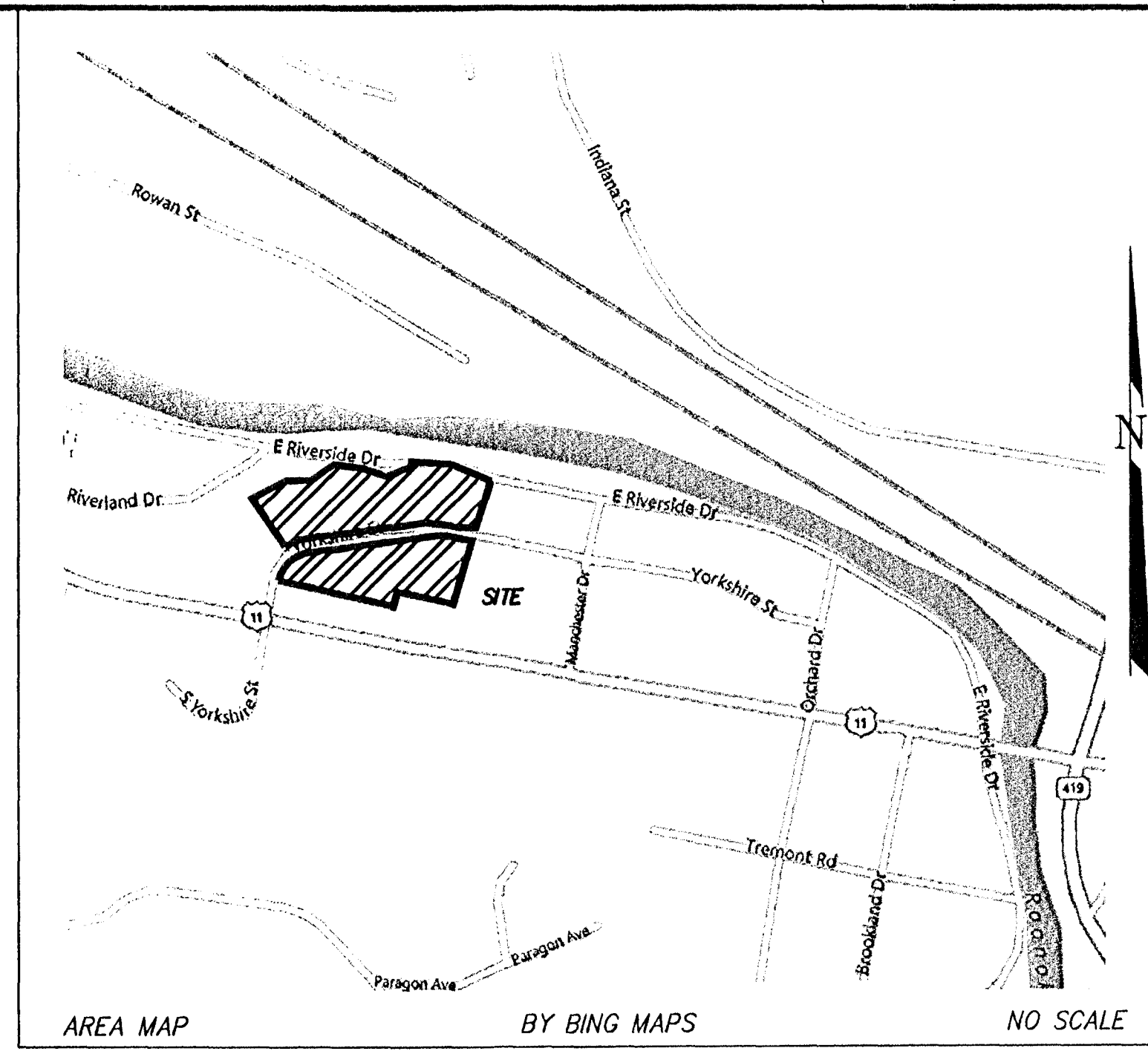


GENERAL NOTES:

1. THIS PLAT WAS PREPARED WITH THE BENEFIT OF TITLE REPORT #5099743 DATED DECEMBER 30, 2104, PREPARED BY FIDELITY NATIONAL TITLE INSURANCE COMPANY AND IS SUBJECT THERETO.
 2. THE SUBJECT PROPERTY IS WITHIN THE LIMITS OF ZONE "AE" & "X" AS SHOWN ON THE FEMA FLOOD INSURANCE RATE MAP PANEL NO. 51161C0143 G, EFFECTIVE DATE SEPTEMBER 28, 2007. THIS DETERMINATION IS BASED ON SAID MAP AND HAS NOT BEEN VERIFIED BY ACTUAL FIELD ELEVATIONS.

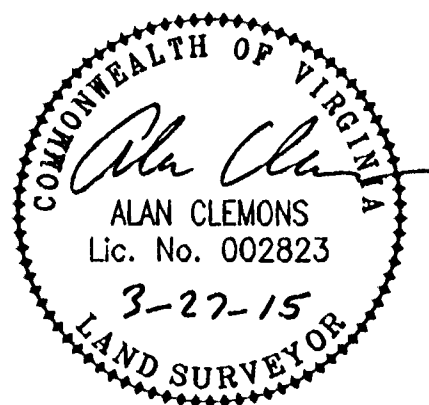
LEGEND

— OHW —	OVERHEAD WIRES
— W —	WATER VALVE
⊕ F.H.	FIRE HYDRANT
⊙	SEWER OR DRAINAGE MANHOLE
⊕	DROP INLET (CURB OR GRATE)
⊖	UTILITY POLE
☆	LIGHT POLE
— x — x —	FENCE
♿	HANDICAPPED SPACE
CONC	CONCRETE
ST. BR.	STORY BRICK
APT. BLDG.	APARTMENT BUILDING
TYP	TYPICAL
S	STOOP
⊗	GAS REGULATOR
D.P.	FENCED DUMPSTER PAD
TRANS	TRANSFORMER
S/W	SIDEWALK
●	MONUMENT FOUND
⊗	TELEPHONE PEDESTAL
CHIS.	CHISELED
⊖	SIGN
⊙	SATELLITE DISH
⊕	HVAC
○	DEEDED CORNER



IN THE CLERK'S OFFICE OF THE CIRCUIT COURT OF THE CITY OF SALEM, VIRGINIA THIS MAP WAS PRESENTED WITH THE CERTIFICATE OF ACKNOWLEDGEMENT THERETO ATTACHED ADMITTED TO RECORD AT 11:25 O'CLOCK a.m. ON THIS 30 DAY OF March, 2015.

TESTE: CHANCE CRAWFORD
 CLERK
 BY: *Carol A. King*
 DEPUTY CLERK



THIS PLAT IS BASED ON A CURRENT FIELD SURVEY. YORKSHIRE HOLDINGS, LLC IS THE OWNER OF RECORD, SEE INST. #150000378.

THIS PLAT DOES NOT CONSTITUTE A SUBDIVISION UNDER THE CITY OF SALEM SUBDIVISION ORDINANCE.

PLAT OF SURVEY FOR
YORKSHIRE HOLDINGS, LLC

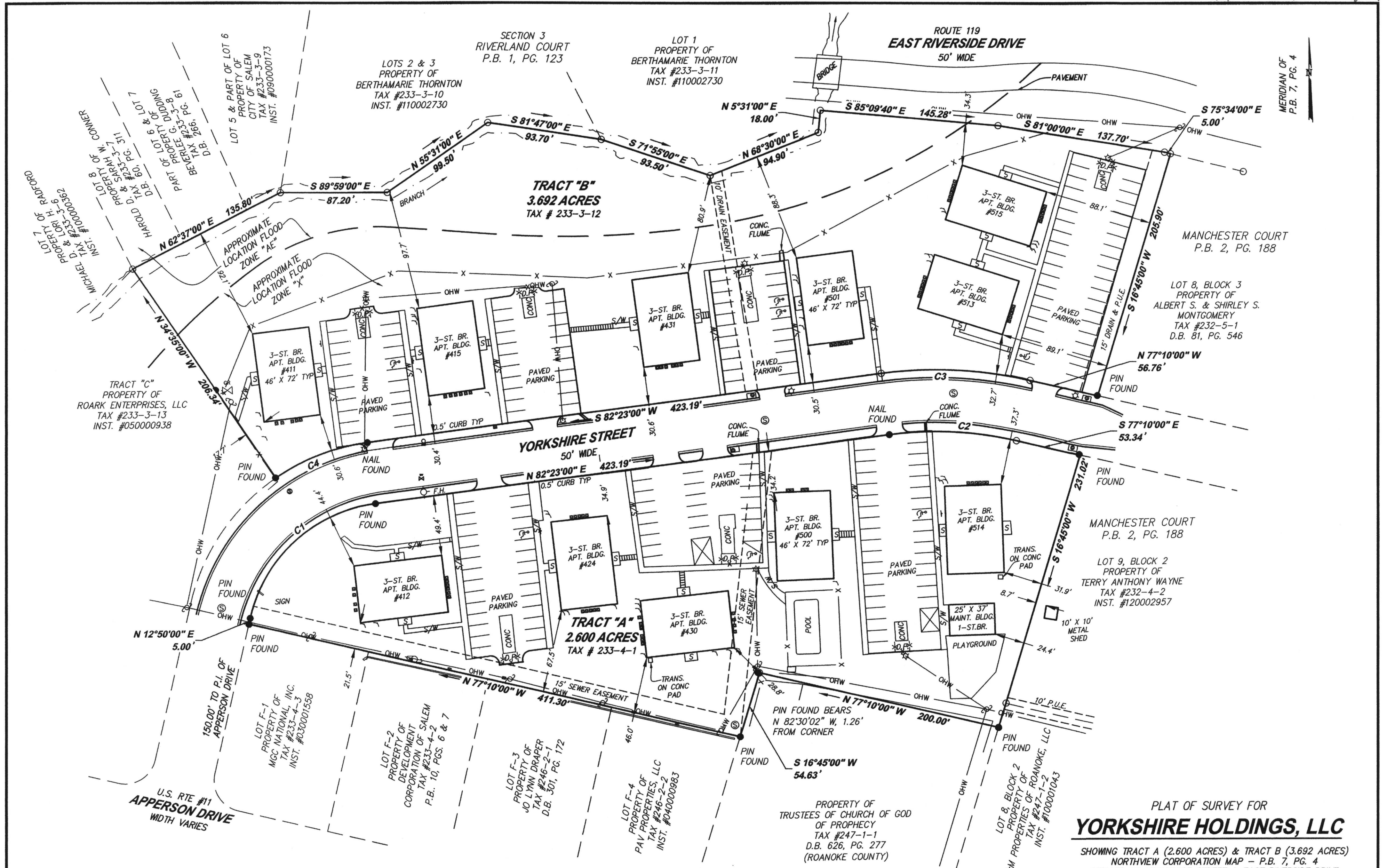
SHOWING TRACT A (2.600 ACRES) & TRACT B (3.692 ACRES)
 NORTHVIEW CORPORATION MAP - P.B. 7, PG. 4
 SITUATE ON YORKSHIRE STREET & EAST RIVERSIDE DRIVE
 CITY OF SALEM, VIRGINIA
 SCALE: 1"=50'
 PAGE 1 OF 2

TAX #: 233-4-1 & 233-3-12
 DRAWN: REC

DATE: 27 MARCH, 2015
 W.O.: 15-0002:02

parker
 DESIGN GROUP
 ENGINEERS * SURVEYORS * PLANNERS * LANDSCAPE ARCHITECTS

816 Boulevard
 Salem, Virginia
 Phone: 540-387-1153
 Fax: 540-389-5767
 www.parkerdg.com



TRACT "C"
PROPERTY OF
ROARK ENTERPRISES, LLC
TAX #233-3-13
INST. #050000938

TRACT "B"
3.692 ACRES
TAX # 233-3-12

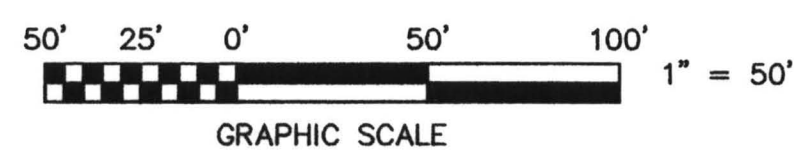
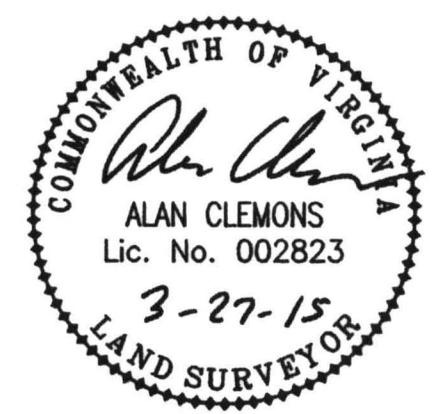
TRACT "A"
2.600 ACRES
TAX # 233-4-1

PLAT OF SURVEY FOR
YORKSHIRE HOLDINGS, LLC

SHOWING TRACT A (2.600 ACRES) & TRACT B (3.692 ACRES)
NORTHVIEW CORPORATION MAP - P.B. 7, PG. 4
SITUATE ON YORKSHIRE STREET & EAST RIVERSIDE DRIVE
CITY OF SALEM, VIRGINIA

SCALE: 1"=50'
PAGE 2 OF 2
TAX # 233-4-1 & 233-3-12
DRAWN: REC
DATE: 27 MARCH, 2015
W.O.: 15-0002:02

CURVE TABLE						
CURVE #	LENGTH	RADIUS	TANGENT	DELTA	CHORD DIRECTION	CHORD LENGTH
C1	147.34'	121.38'	84.28'	69°33'01"	N 47°36'30"E	138.46'
C2	104.18'	291.89'	52.65'	20°27'01"	S 87°23'30"E	103.63'
C3	122.03'	341.89'	61.67'	20°27'01"	N 87°23'30"W	121.38'
C4	80.66'	171.38'	41.09'	26°58'01"	S 68°54'00"W	78.92'



parker
DESIGN GROUP
ENGINEERS * SURVEYORS * PLANNERS * LANDSCAPE ARCHITECTS

816 Boulevard
Salem, Virginia
Phone: 540-387-1153
Fax: 540-389-5767
www.parkerdgm.com