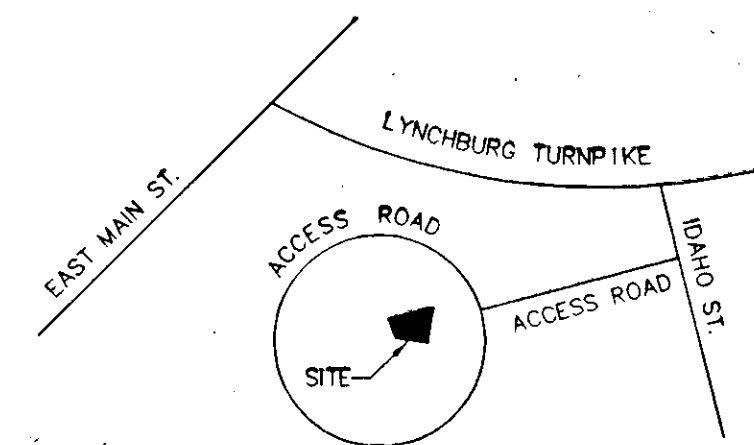
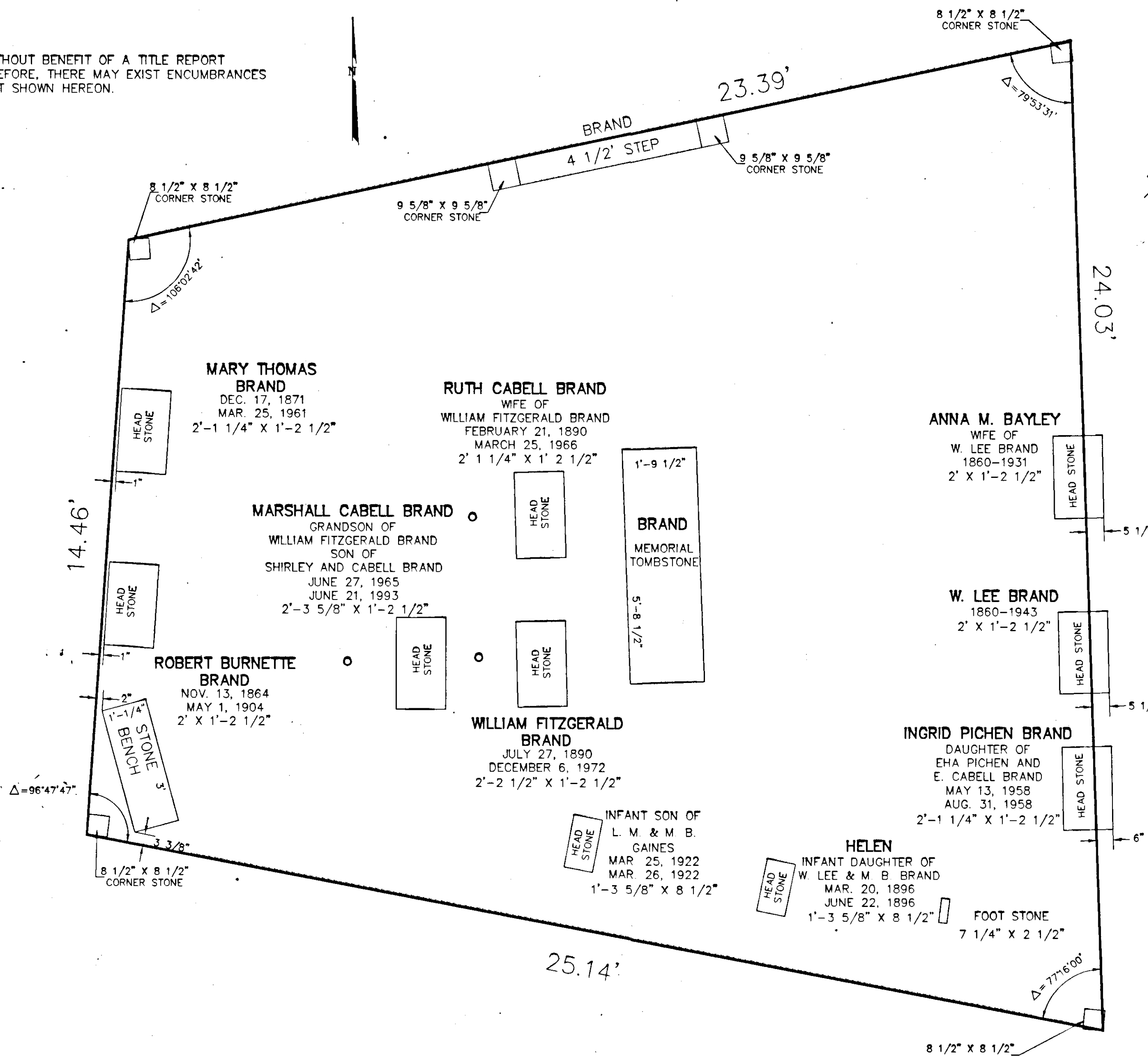


GENERAL NOTES:

1. THIS PLAT WAS PREPARED WITHOUT BENEFIT OF A TITLE REPORT AND IS SUBJECT THERETO. THEREFORE, THERE MAY EXIST ENCUMBRANCES WHICH AFFECT THE PROPERTY NOT SHOWN HEREON.

LEGEND

○ = CANISTER VASE



LOCATION MAP
NO SCALE

**SURVEY FOR
E. CABELL BRAND**

SHOWING THE LOCATION OF THE EXISTING GRAVE MARKER STONES IN THE "BRAND" PARCEL IN EAST HILL CEMETERY AND AVAILABLE GRAVESITES FOR CREMATION URNS SALEM, VIRGINIA

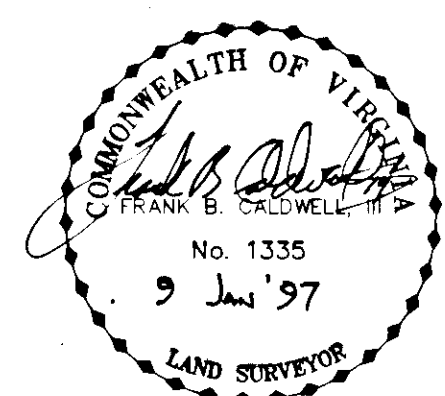
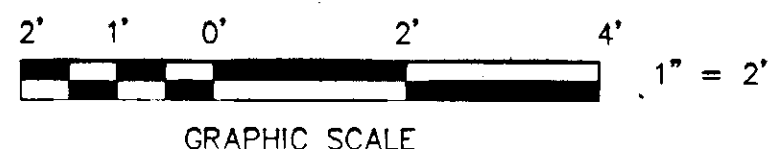
CALC: LRD
DRAWN: LRD/143
N.B. JR-163

SCALE: 1" = 2'
DATE: JAN. 7, 1997
W.O. 96-0961

IN THE CLERK'S OFFICE OF THE CIRCUIT COURT OF THE CITY OF SALEM, VIRGINIA THIS MAP WAS PRESENTED WITH THE CERTIFICATE OF ACKNOWLEDGMENT THERETO ATTACHED ADMITTED TO RECORD AT _____ O'CLOCK _____ M. ON THIS _____ DAY OF _____, 1997.

TESTE: CHANCE CRAWFORD
CLERK

BY: *Amber N. Metzler*
DEPUTY CLERK



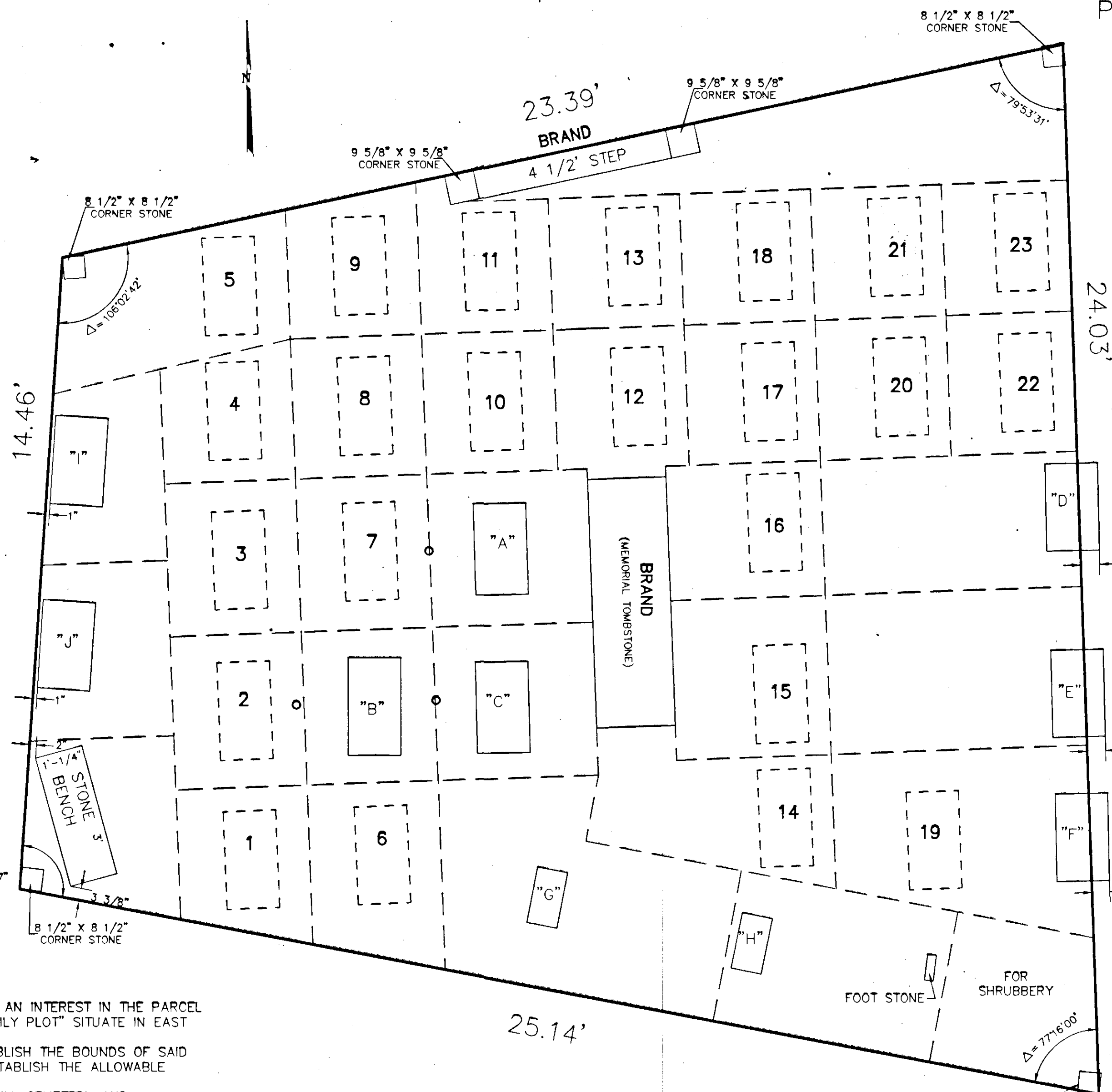
Inst. # 1794

SHEET 1 OF 2

EXISTING GRAVES

- | | |
|----------------------------------------------------------------------------------------------------------------------------------------------------------------------|-------------------------------------------------------------------------------------------------------------------------------------|
| <p>"A"
RUTH CABELL BRAND
WIFE OF
WILLIAM FITZGERALD BRAND
FEBRUARY 21, 1890
MARCH 25, 1966</p> | <p>"F"
INGRID PICHEN BRAND
DAUGHTER OF
EHA PICHEN AND
E. CABELL BRAND
MAY 13, 1958
AUG. 31, 1958</p> |
| <p>"B"
MARSHALL CABELL BRAND
GRANDSON OF
WILLIAM FITZGERALD BRAND
SON OF
SHIRLEY AND CABELL BRAND
JUNE 27, 1965
JUNE 21, 1993</p> | <p>"G"
INFANT SON OF
L. M. & M. B.
GAINES
MAR. 25, 1922
MAR. 26, 1922</p> |
| <p>"C"
WILLIAM FITZGERALD BRAND
JULY 27, 1890
DECEMBER 6, 1972</p> | <p>"H"
HELEN
INFANT DAUGHTER OF
W. LEE & M. B. BRAND
MAR. 20, 1896
JUNE 22, 1896</p> |
| <p>"D"
ANNA M. BAYLEY
WIFE OF
W. LEE BRAND
1860-1931</p> | <p>"I"
MARY THOMAS BRAND
DEC. 17, 1871
MAR. 25, 1961</p> |
| <p>"E"
W. LEE BRAND
1860-1943</p> | <p>"J"
ROBERT BURNETTE BRAND
NOV. 13, 1864
MAY 1, 1904</p> |

A TENTATIVE LIST OF PROPOSED CREMATION URN BURIAL SITES IN THE "BRAND" PARCEL IN EAST HILL CEMETERY, SALEM, VIRGINIA WILL BE MAINTAINED BY JOHN M. OAKLEY, SALEM, VIRGINIA.



AVAILABLE GRAVESITES FOR CREMATION URNS
1 THRU 23

SURVEY FOR E. CABELL BRAND

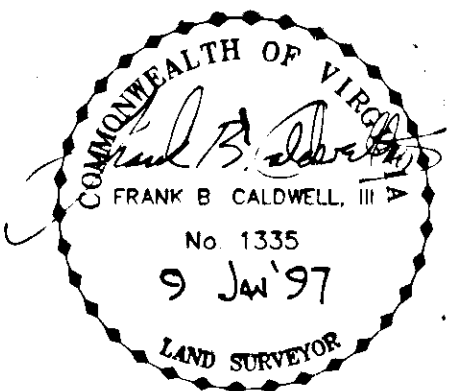
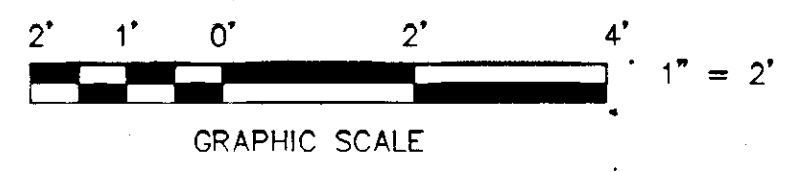
SHOWING THE LOCATION OF THE EXISTING GRAVE MARKER STONES IN THE "BRAND" PARCEL IN EAST HILL CEMETERY AND AVAILABLE GRAVESITES FOR CREMATION URNS SALEM, VIRGINIA

KNOW ALL MEN BY THESE PRESENTS TO WIT:
THAT THE BRAND FAMILY AND E. CABELL BRAND HAS AN INTEREST IN THE PARCEL OF LAND SHOWN HEREON AND KNOWN AS THE "BRAND FAMILY PLOT" SITUATE IN EAST HILL CEMETERY, SALEM, VIRGINIA
WHEREAS IT IS THE DESIRE OF THE PARTIES TO ESTABLISH THE BOUNDS OF SAID PLOT AND THE EXISTING GRAVE SITES THEREON AND TO ESTABLISH THE ALLOWABLE FUTURE GRAVES
AND WHEREAS THE CITY OF SALEM MAINTAINS EAST HILL CEMETERY AND REGULATES BURIAL THEREIN
THE BRAND FAMILY WITH THE APPROVAL OF THE CITY OF SALEM, VIRGINIA, NOW HEREBY ESTABLISHES THE LIMITS OF THE EXISTING AND FUTURE GRAVE SITES AS SHOWN HEREON AND HAS CAUSED THIS MAP OF SAID BURIAL PLOT TO BE RECORDED.

E. Cabell Brand 3/3/97 DATE
E. CABELL BRAND, FOR BRAND FAMILY
R.M. Smith 3/17/97 DATE
CITY MANAGER
CITY OF SALEM

NOTE:
THE MAP IS BASED ON ALL REMAINS HAVING SUFFICIENT SPACE TO BE INTERRED WITHIN THE BOUNDARIES OF THE BRAND LOT.

CALC: LRD
DRAWN: LRD/143
N.B. JR-163
SCALE: 1" = 2'
DATE: JAN. 7, 1997
REV: MAR. 5, 1997
W.O. 96-0961



TPP&S T. P. PARKER & SON
ENGINEERS 816 Boulevard
SURVEYORS Post Office Box 39
PLANNERS Salem, Virginia 24153

Insk # 794