

- NOTES:
1. THIS PLAT IS SUBJECT TO INFORMATION WHICH MAY BE DISCLOSED BY A TITLE REPORT BY A LICENSED ATTORNEY.
 2. SEE SANITARY SEWER EXTENSION FOR CITY OF SALEM CONSTRUCTION PLANS BY T. P. PARKER & SON DATED FEBRUARY 18, 1991.
 3. SEE LEE MITCHELL SUBDIVISION RECORDED IN P.B. 3, PG. 203.
 4. SEE VDOT PROJECT NO. 0112-080-101-C-501, 0081-080-001 FOR RIGHT-OF-WAY LOCATION OF INTERSTATE 81 AND PORTION OF LITCHELL ROAD.
 5. METES AND BOUNDS DESCRIPTIONS SHOWN HEREON REPRESENT A COMPOSITE OF DEEDS, PLATS, CALCULATED INFORMATION AND FIELD TIES TO PROPERTY BOUNDARIES TO LOCATE THE POSITION OF THE EASEMENT IN RELATION TO THE BOUNDARIES. THIS SURVEY DOES NOT REFLECT A COMPLETE AND ACCURATE BOUNDARY SURVEY OF THE SUBJECT PROPERTIES.
 6. EASEMENTS SHOWN ARE BASED ON AS-BUILT MANHOLE LOCATIONS PROVIDED BY THE CITY OF SALEM, VIRGINIA.

PROPERTY OF
SECRETARY OF VETERANS
AFFAIRS
TAX NO. 94-1-3
D.B. 158, PG. 621

PROPERTY OF
LESTER E. FOUTZ, ET UX
TAX NO. 94-1-3.1
D.B. 89, PG. 715

PROPERTY OF
RONALD E. McCAULEY
TAX NO. 97-2-3
D.B. 128, PG. 152

NEW 20' SANITARY
SEWER EASEMENT

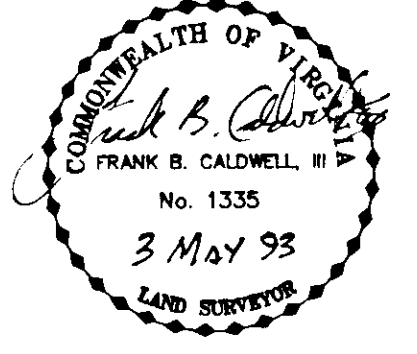
PROPERTY OF
WILLIAM H. & SHIRLEY WILLIS
TAX NO. 94-1-2.1
D.B. 53, PG. 628

PROPERTY OF
KENNIS N. & DELORES W.
GRAY
TAX NO. 94-1-2
D.B. 758, PG. 496

PROPERTY OF
STEPHEN L. & SHERRY V.
REYNOLDS
TAX NO. 97-2-1.1
D.B. 90, PG. 181

PROPERTY OF
MICHAEL D. REYNOLDS
TAX NO. 97-2-2
D.B. 501, PG. 412

PROPERTY OF
ROBERT C. & PEGGY S. RASH
TAX NO. 97-2-2
D.B. 684, PG. 68



EASEMENT PLAT FOR
CITY OF SALEM

SHOWING NEW 20' SANITARY SEWER EASEMENTS THROUGH PROPERTIES IN LEE MITCHELL SUBDIVISION, P.B. 3, PG. 203

SALEM, VIRGINIA

T. P. PARKER & SON
ENGINEERS - SURVEYORS - PLANNERS
816 BOULEVARD
SALEM, VIRGINIA

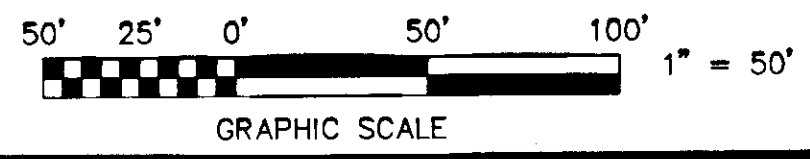
TAX NO. AS SHOWN
DRAWN: DAP/CADD
CALC.: DAP
N.B.: CS #3
REVISED: APRIL 30, 1993
REVISED: SEPT. 22, 1992
REVISED: OCT. 7, 1991

SCALE: 1" = 50'
MAY 30, 1991
W.O.90-0540
92-1492

SHEET 1 OF 4
P.B. 5 PG. 23

IN THE CLERK'S OFFICE OF THE CIRCUIT COURT OF THE CITY OF SALEM, VIRGINIA THIS MAP WAS PRESENTED AND ADMITTED TO RECORD AT 10:38 O'CLOCK A.M. ON THIS 5 DAY OF May 1993.

TESTE: CHANCE CRAWFORD
CLERK
DEPUTY CLERK

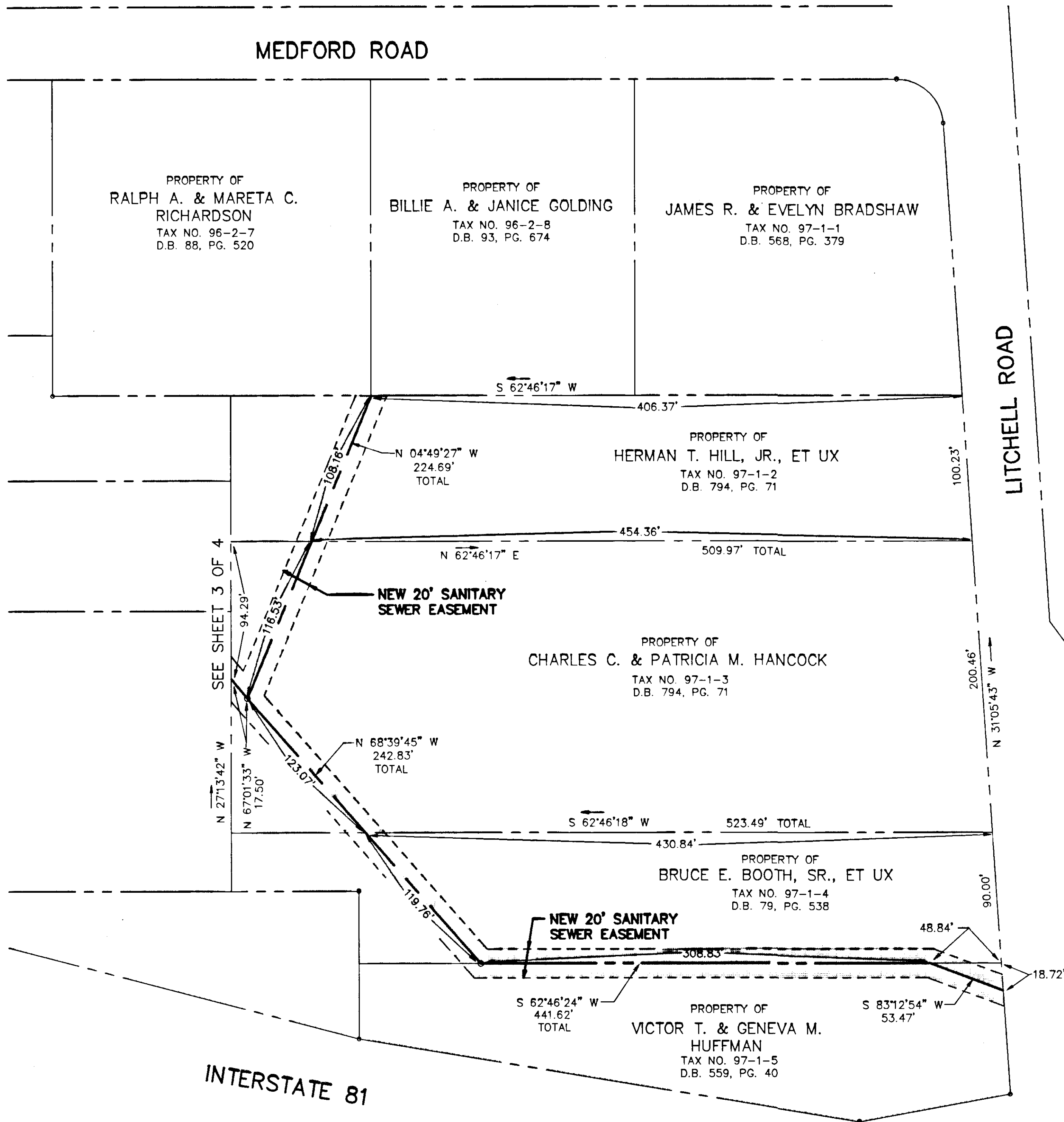


FOR CONTINUATION OF SEWER
LINE, SEE SHEET 4 OF 4

MEDFORD ROAD

LITCHELL ROAD

LITCHELL ROAD

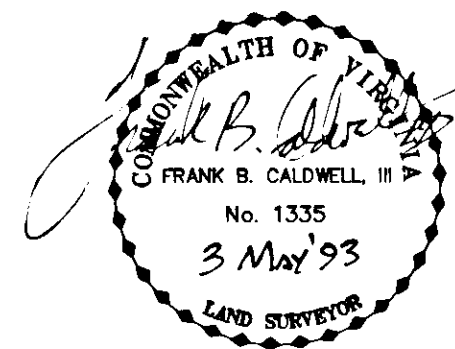


MERIDIAN OF VDOT PROJECT
#0081-060-001-RW-201

IN THE CLERK'S OFFICE OF THE CIRCUIT COURT OF
THE CITY OF SALEM, VIRGINIA THIS MAP WAS PRESENTED
AND ADMITTED TO RECORD AT 10:40 O'CLOCK A.M. ON
THIS 5 DAY OF May 1993.

TESTE: CHANCE CRAWFORD
CLERK

Lawrence K. Kiser
DEPUTY CLERK



EASEMENT PLAT FOR
CITY OF SALEM

SHOWING NEW 20' SANITARY SEWER EASEMENTS THROUGH
PROPERTIES IN LEE MITCHELL SUBDIVISION, P.B. 3, PG. 203

SALEM, VIRGINIA

T. P. PARKER & SON
ENGINEERS - SURVEYORS - PLANNERS
816 BOULEVARD
SALEM, VIRGINIA

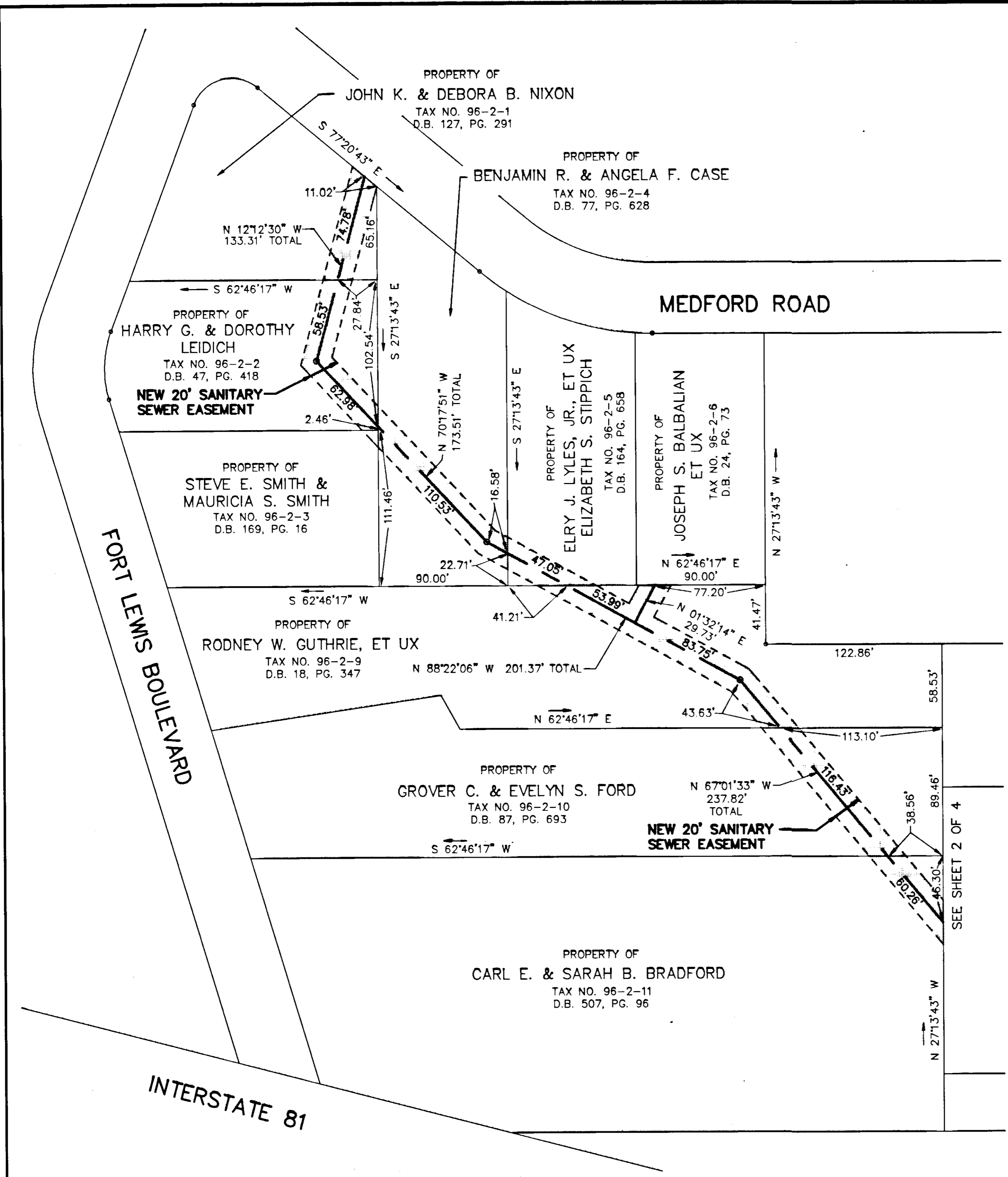
TAX NO. AS SHOWN
DRAWN: DAP/CADD
CALC.: DAP
N.B.: CS #3

SCALE: 1" = 50'
MAY 30, 1991
W.O.90-0540
92-1492

REVISED: APRIL 30, 1993
REVISED: OCT. 7, 1991

SHEET 2 OF 4
P.B. 5 PG. 24

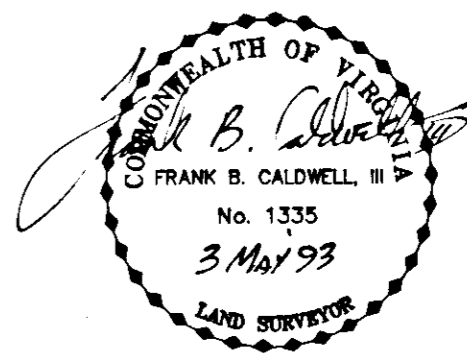
MERIDIAN OF FOOT PROJECT
0081-080-001-RW-201



IN THE CLERK'S OFFICE OF THE CIRCUIT COURT OF THE CITY OF SALEM, VIRGINIA THIS MAP WAS PRESENTED AND ADMITTED TO RECORD AT 10:41 O'CLOCK A.M. ON THIS 5 DAY OF May 1993.

TESTE: CHANCE CRAWFORD
CLERK

Karen W. Kiffe
DEPUTY CLERK



EASEMENT PLAT FOR
CITY OF SALEM

SHOWING NEW 20' SANITARY SEWER EASEMENTS THROUGH PROPERTIES IN LEE MITCHELL SUBDIVISION, P.B. 3, PG. 203

SALEM, VIRGINIA

T. P. PARKER & SON
ENGINEERS - SURVEYORS - PLANNERS
816 BOULEVARD
SALEM, VIRGINIA

TAX NO. AS SHOWN
DRAWN: DAP/CADD
CALC.: DAP
N.B.: CS #3

SCALE: 1" = 50'
MAY 30, 1991
W.O.90-0540
92-1492

REVISED: APRIL 30, 1993
REVISED: OCT. 7, 1991

SHEET 3 OF 4
P.B. 5 PG. 25

FOR CONTINUATION OF SEWER LINE, SEE SHEET 1 OF 4

LITCHELL ROAD

MEDFORD ROAD

PROPERTY OF CHARLES E. & PATSY S. VAUGHT
TAX NO. 95-1-3
D.B. 141, PG. 355

PROPERTY OF GEORGE R. & MARION G. BROGAN
TAX NO. 95-1-2
D.B. 704, PG. 454

PROPERTY OF OSCAR P. & GLENNA M. MOWLES
TAX NO. 95-1-1
D.B. 546, PG. 273

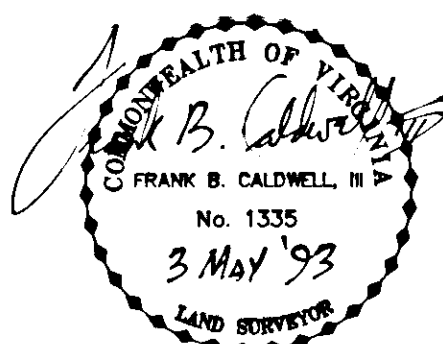
S 50°35'17" W
127.58'

S 51°11'13" W
127.57'

CURVE "A"

R = 29.96'
L = 47.10'
CH = S 17°40'39" W
42.40'

MERIDIAN OF VDOT PROJECT
#0081-080-001-RW-201



EASEMENT PLAT FOR CITY OF SALEM

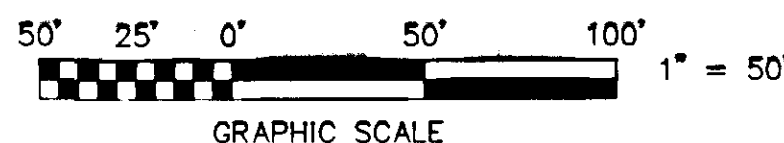
SHOWING NEW 20' SANITARY SEWER EASEMENTS THROUGH PROPERTIES IN LEE MITCHELL SUBDIVISION, P.B. 3, PG. 203

SALEM, VIRGINIA

T. P. PARKER & SON
ENGINEERS - SURVEYORS - PLANNERS
816 BOULEVARD
SALEM, VIRGINIA

TAX NO. AS SHOWN
DRAWN: DAP/CADD
CALC.: DAP
N.B.: CS #3

SCALE: 1" = 50'
SEPTEMBER 22, 1992
W.O. 90-0540
92-1492



IN THE CLERK'S OFFICE OF THE CIRCUIT COURT OF THE CITY OF SALEM, VIRGINIA THIS MAP WAS PRESENTED AND ADMITTED TO RECORD AT 10:48 O'CLOCK A.M. ON THIS 5 DAY OF May 1993.

TESTE: CHANCE CRAWFORD
CLERK
Deputy Clerk

REVISED: APRIL 30, 1993

SHEET 4 OF 4
P.B. 5 PG. 26