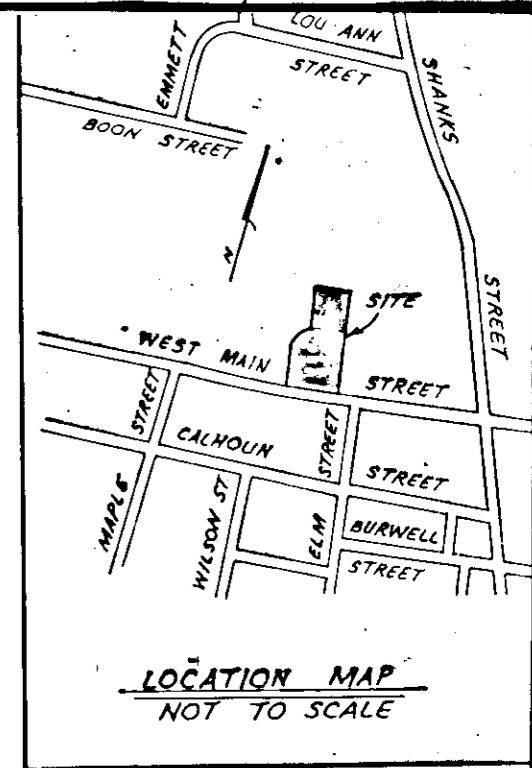
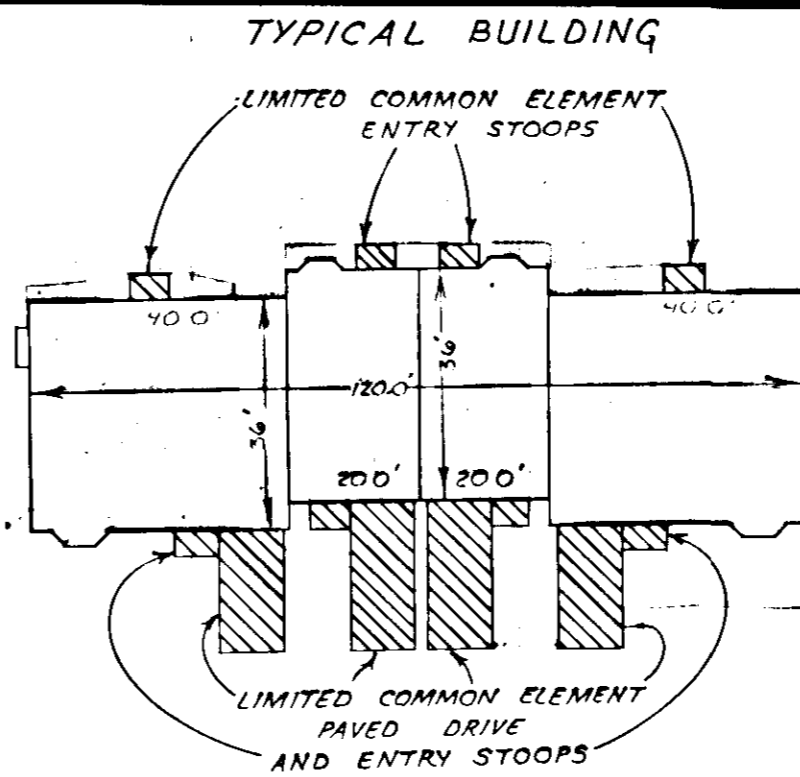


EXHIBIT A
0.409 ACRE
PHASE II
BURWELL PLACE CONDOMINIUM

SITUATED ON THE NORTH SIDE
 OF WEST MAIN STREET
 CITY OF SALEM, VIRGINIA
 DATE: NOVEMBER 1, 1986
 SHEET 1 OF 3

DECLARANT: WYCLIFFE DEVELOPMENT COMPANY



AREA PHASE I 1.092 ACRES
 AREA PHASE II 0.409 ACRE
 TOTAL 1.501 ACRES

SEIBERT W LAVINDER
 D.B. 75 PG. 358

CITY OF SALEM

V 73°05'10" E 261.00'
 15' PUBLIC UTILITY ESM'T (PUE)

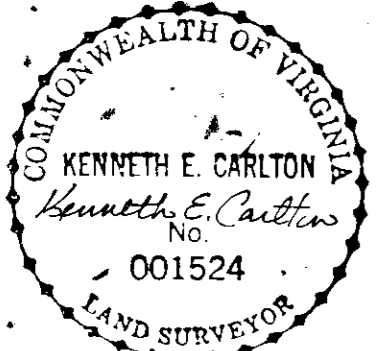
I HEREBY CERTIFY THIS PLAT AND PLAN OF CONDOMINIUM SUBDIVISION CONSISTING OF THREE (3) SHEETS, IS CORRECT. THAT IT IS A SUBDIVISION OF LAND AND BUILDINGS ENTITLED PHASE II BURWELL PLACE CONDOMINIUM AS RECORDED AMONG THE LAND RECORDS OF CITY OF SALEM, VIRGINIA IN DEED BOOK PAGE AND OF IMPROVEMENTS LOCATED THEREON CONSISTING OF ONE (1) BUILDING CONTAINING EIGHT (8) UNITS AND THAT IT HAS BEEN PREPARED PURSUANT TO AND IN COMPLIANCE WITH THE REQUIREMENTS AND PROVISIONS OF CHAPTER 42, IN TITLE 55-79, 58 (a) OF THE CODE OF VIRGINIA OF 1950. AS AMENDED, I.E. "THE CONDOMINIUM ACT". I FURTHER CERTIFY THAT THE LOCATIONS AND DIMENSIONS OF ALL EXISTING IMPROVEMENTS HAVE BEEN CAREFULLY ESTABLISHED BY A TRANSIT TAPE SURVEY AND THAT, UNLESS OTHERWISE SHOWN THERE ARE NO VISABLE ENCROACHMENTS. WE FURTHER CERTIFY THAT ALL CONDOMINIUM UNITS, OR PORTIONS THEREOF, DEPICTED ON THIS PLAT AND PLAN OF CONDOMINIUM SUBDIVISION HAVE BEEN SUBSTANTIALLY COMPLETED. THE TOTAL AREA INCLUDED WITHIN THE BOUNDS OF PHASE II BURWELL PLACE CONDOMINIUM IS 0.409 ACRES AND 1.824 ACRES OF CONVERTIBLE LAND.

Kenneth E. Carlton 10-7-87
 KENNETH E. CARLTON, L.S. DATE

IN THE CLERK'S OFFICE OF THE CIRCUIT COURT OF THE CITY OF SALEM, VIRGINIA THIS PLAT WAS PRESENTED ON THIS 22ND DAY OF October, 1987 AND WITH THE CERTIFICATE OF ACKNOWLEDGEMENT THERETO ANNEXED ADMITTED TO RECORD AT 13:01 O'CLOCK P.M.

TESTEE: *James J. Inhey* BY *David M. Journell*
 CLERK DEPUTY CLERK

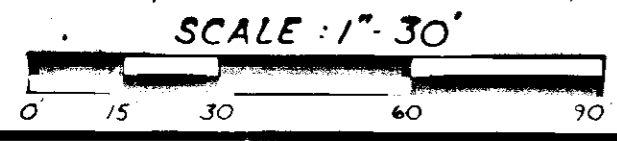
PARKING PHASE I 14 SPACES
 PARKING PHASE II GARAGE UNITS 4 SPACES
 COMMON PARKING 5 SPACES
 LIMITED PARKING 4 SPACES
 TOTAL 27 SPACES



MIRANDA FRANCES LAVINDER
 HEIRS
 D.B. 71 PG. 562

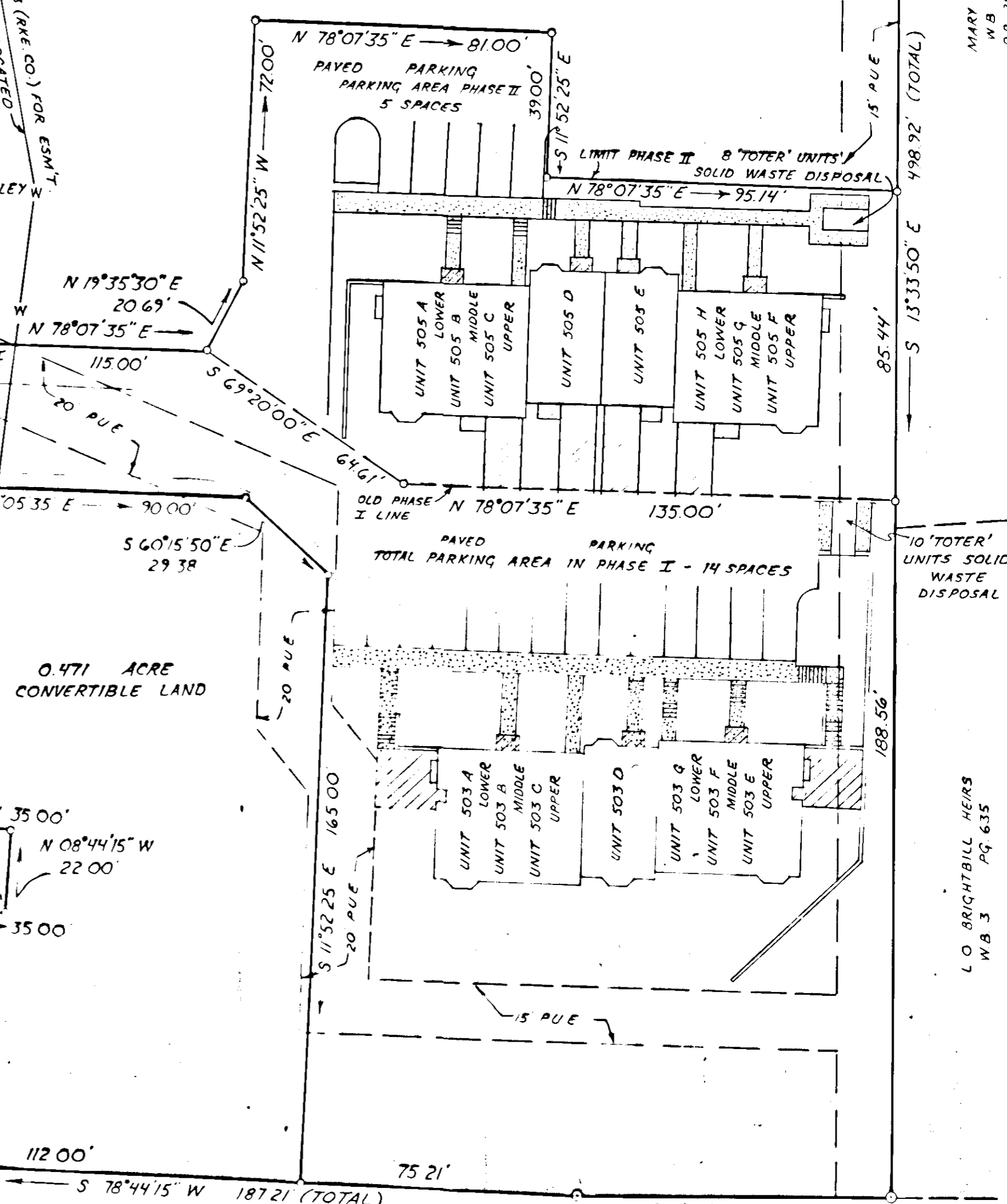
NOTES
 1 REFERENCE: DEED BOOK 116, PAGE 795
 2 TAX NO: 123 1-4
 3 PROPERTY NOT IN ANY HUD FLOOD HAZARD ZONE

LEGEND
 SURVEYED PROPERTY LINE
 DEED LINE
 FOUND IRON
 SET IRON REBAR
 CONCRETE MONUMENT
 DENOTES CONCRETE



WEST MAIN STREET 60' R/W

1.353 ACRES
 CONVERTIBLE LAND



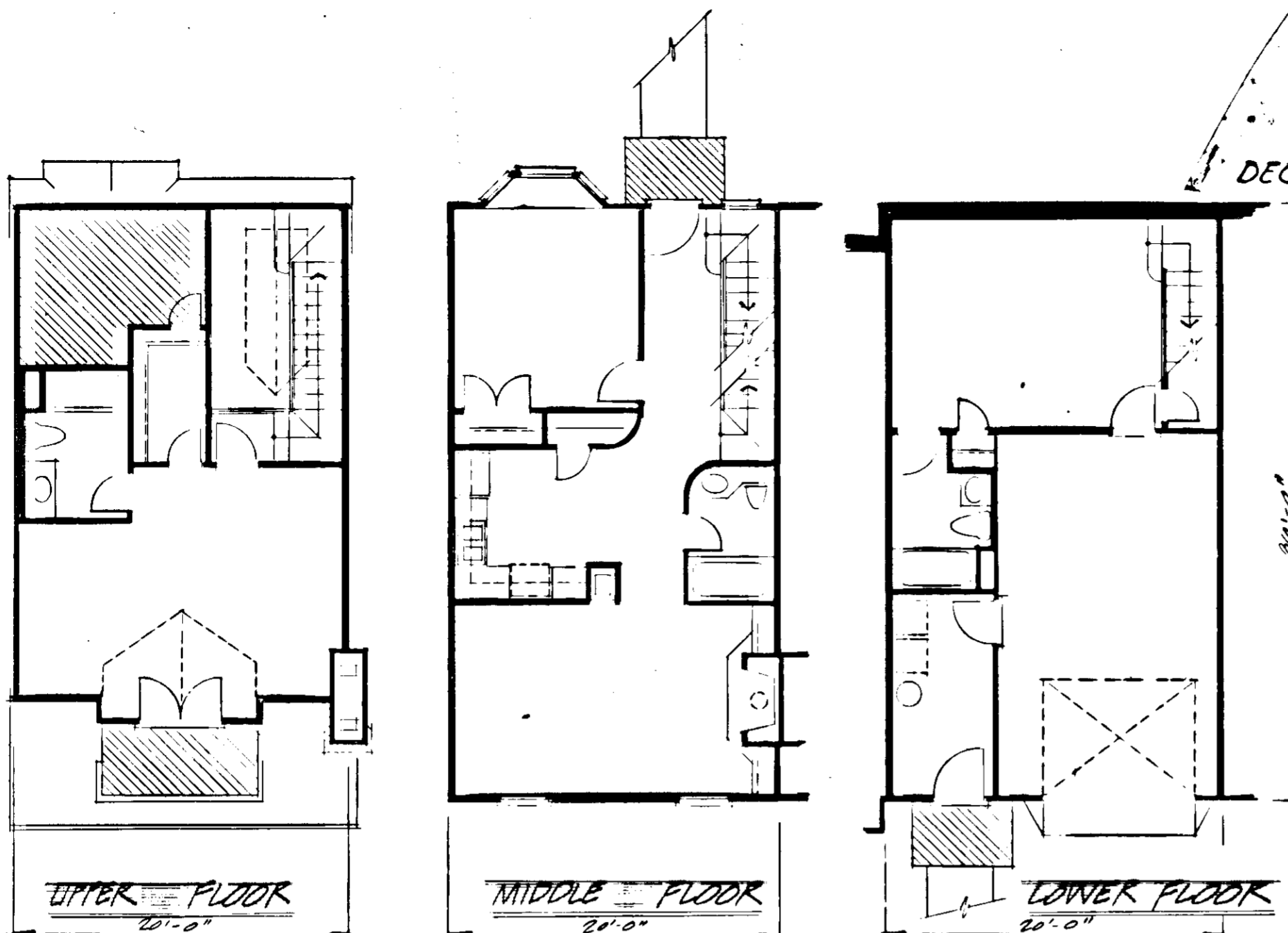
MARY B EPLING
 W.B. 4 PG. 173
 D.B. 254 PG. 537

LO BRIGHTBILL HEIRS
 W.B. 3 PG. 635

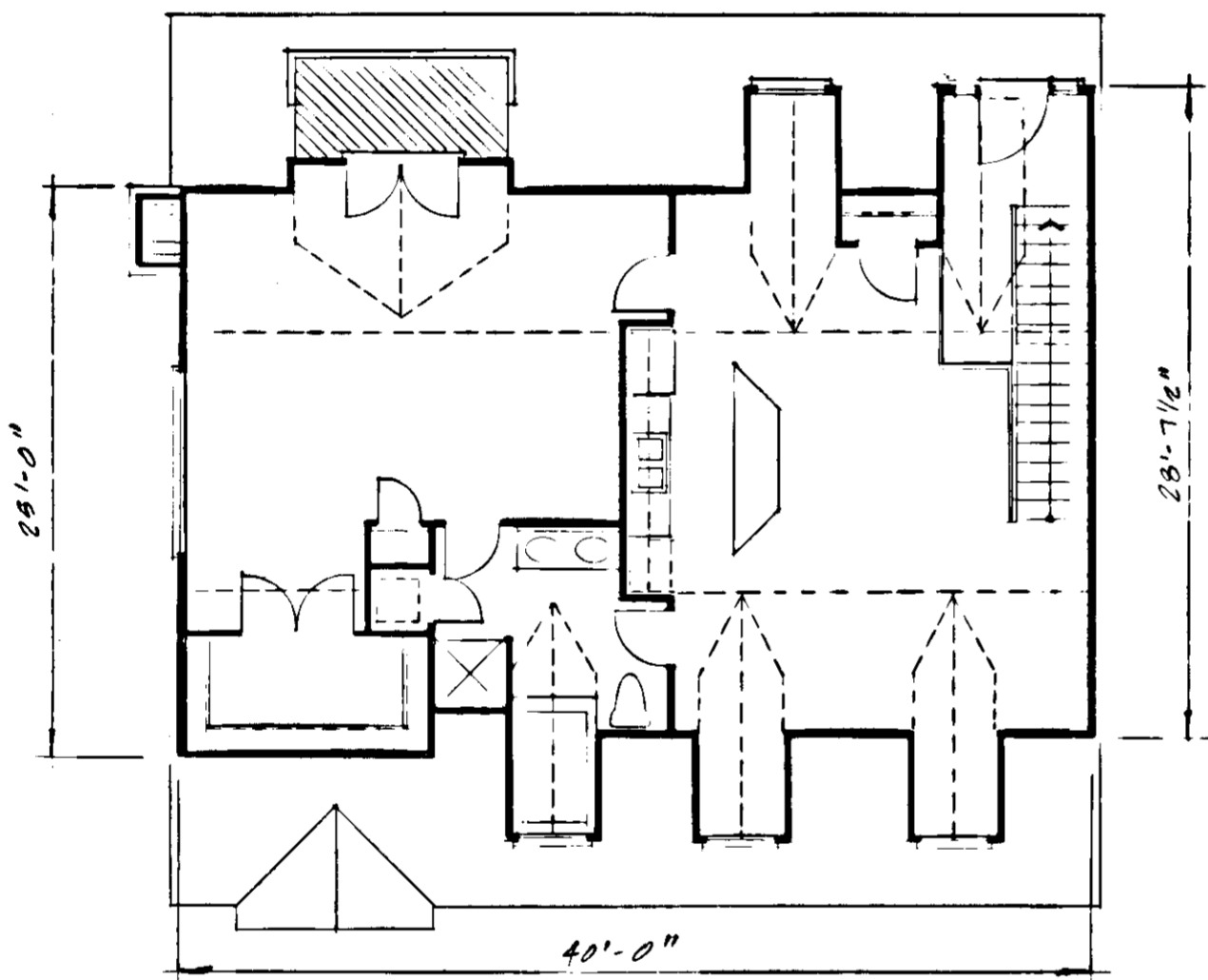
BURWELL PLACE CONDOMINIUM

SITUATED ON THE NORTH SIDE
OF WEST MAIN STREET
CITY OF SALEM, VIRGINIA
DATE: NOVEMBER 1, 1986
SHEET 2 OF 3

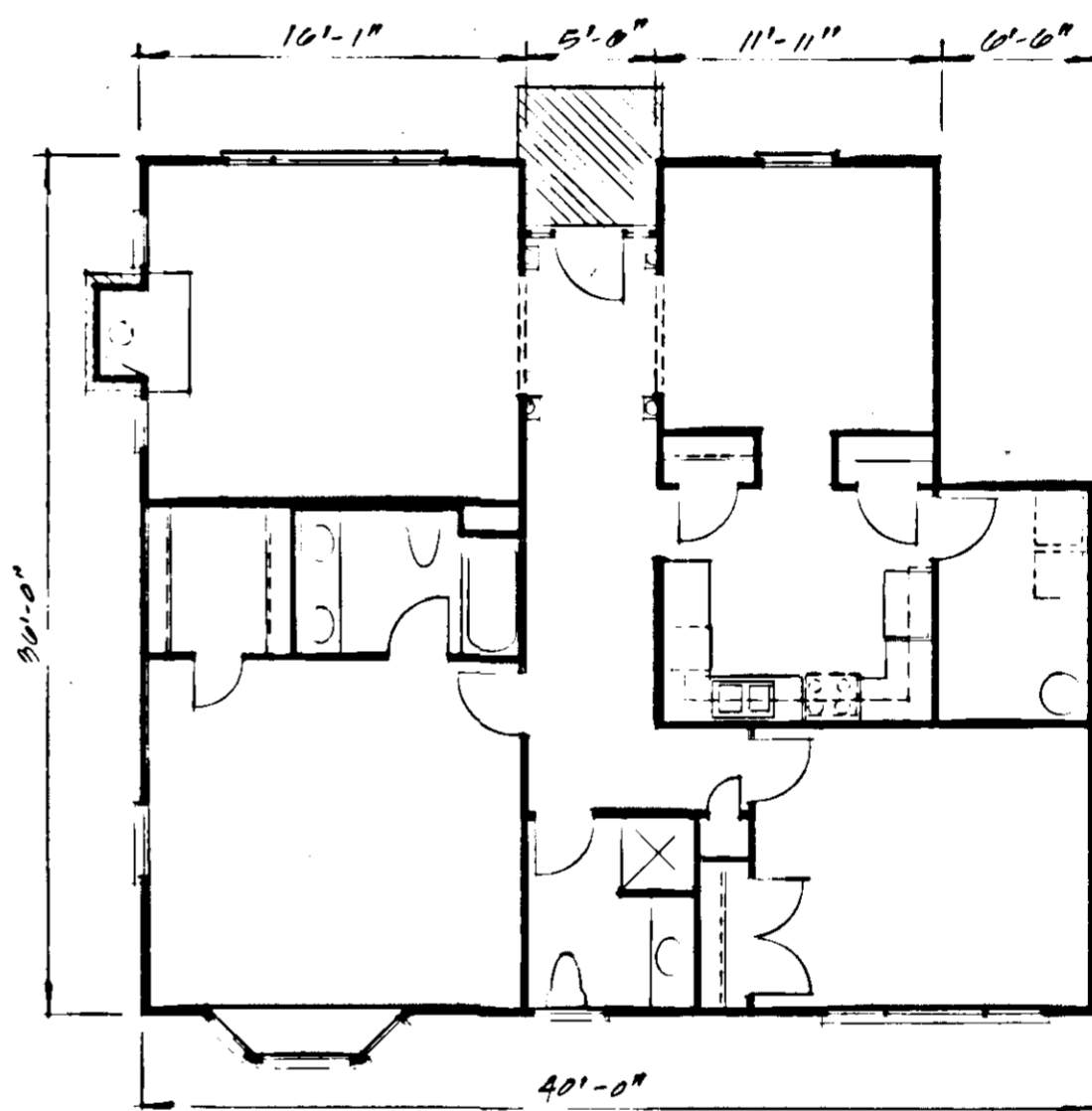
DECLARANT: WYCLIFFE DEVELOPMENT COMPANY



UNIT NO. 505-D.E. *OPPOSITE HAND*
2 BEDROOM 2067 S.F.



UNIT NO. 505-C.F.
1 BEDROOM 1160 S.F.



UNIT NO. 505-B.G.
2 BEDROOM 1337 S.F.

PHASE II FLOOR PLANS

SCALE 1/8" = 1'-0"

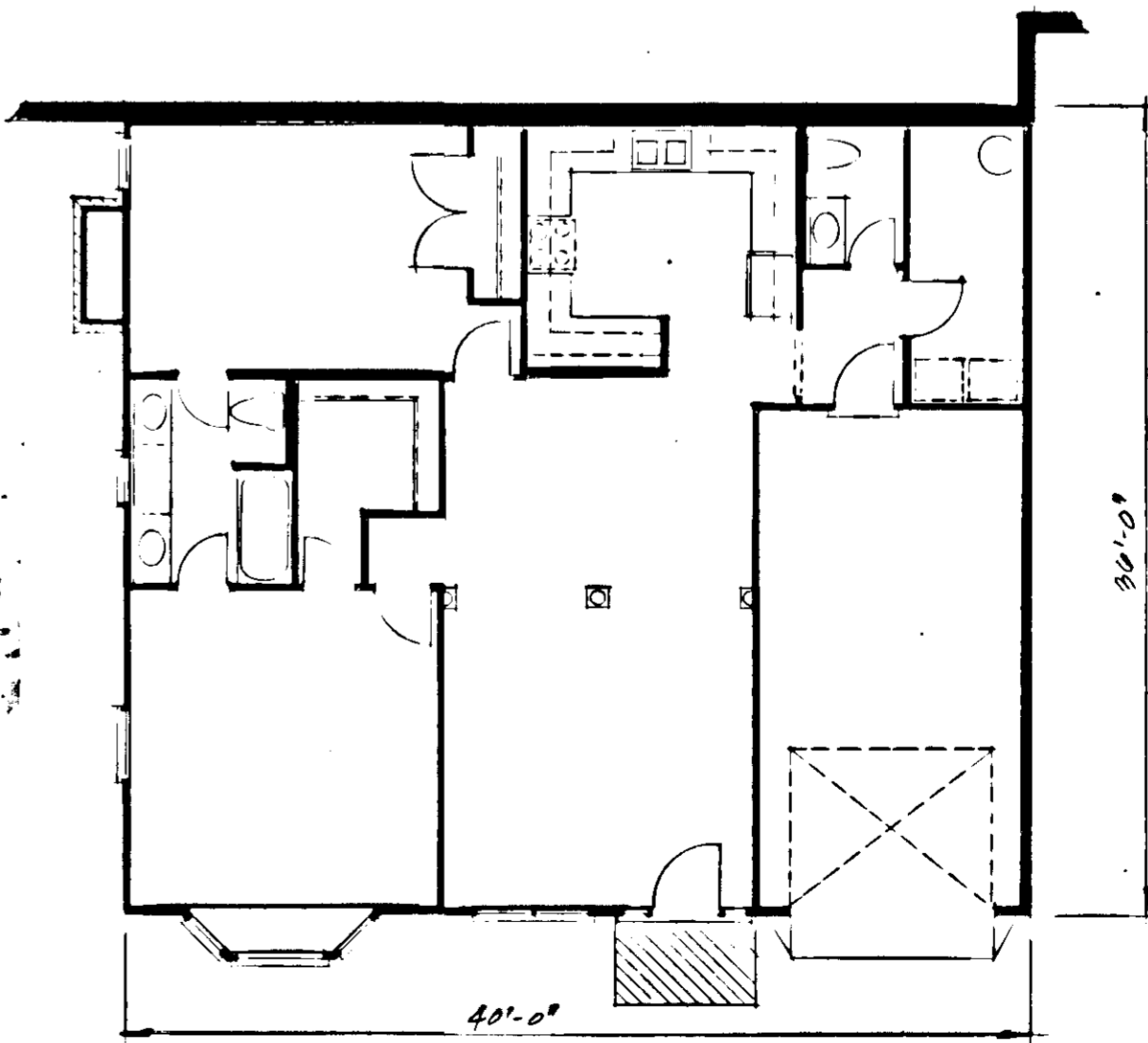
ARCHITECT'S CERTIFICATE

I, **JOHN B. FULTON JR.**, A REGISTERED ARCHITECT IN THE COMMONWEALTH OF VIRGINIA HEREBY CERTIFY THAT THIS PLAN ACCURATELY SHOWS THE UNITS DELINEATED AND IN ALL RESPECTS COMPLIES WITH THE PROVISIONS OF SECTION 55-79.58 (b) OF THE VIRGINIA CONDOMINIUM ACT. I FURTHER CERTIFY THAT UNLESS NOTED OTHERWISE, ALL UNITS DEPICTED HEREON, WITHIN PHASE I OF BURWELL PLACE CONDOMINIUM, HAVE BEEN SUBSTANTIALLY COMPLETED.

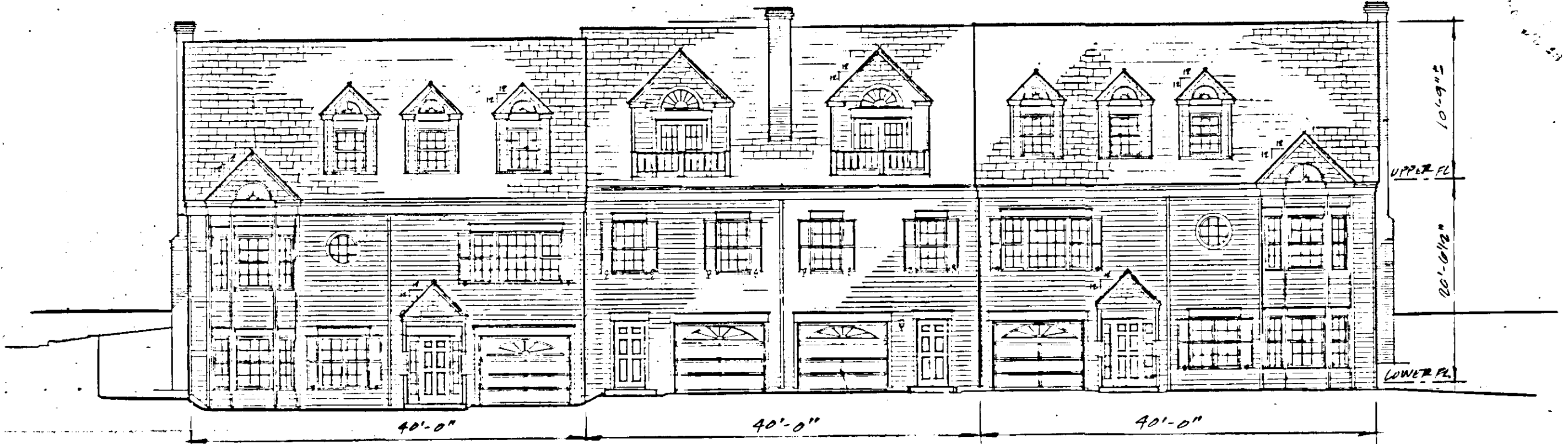
GIVEN UNDER MY HAND THIS 7th DAY OF October, 1987.

John B. Fulton Jr.
REGISTERED ARCHITECT

NOTE:
INCLUDED AS PART OF EACH UNIT IS THE DRY WALL COVERING ENCLOSING SUCH UNIT. ALL INTERIOR DIMENSIONS SHOWN ON PLANS ARE MEASURED TO THE INSIDE FACE OF STUDS..



UNIT NO. 505-A.H.
2 BEDROOM / GARAGE 1452 S.F.

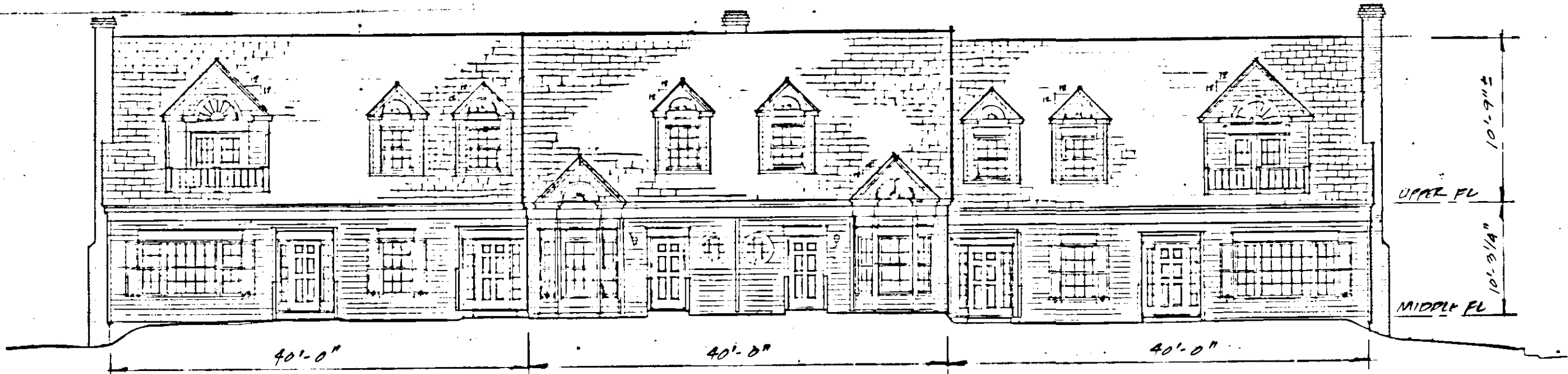


BURWELL PLACE CONDOMINIUM

SITUATED ON THE NORTH SIDE
OF WEST MAIN STREET
CITY OF SALEM, VIRGINIA
DATE: NOVEMBER 1, 1986
SHEET 3 OF 3

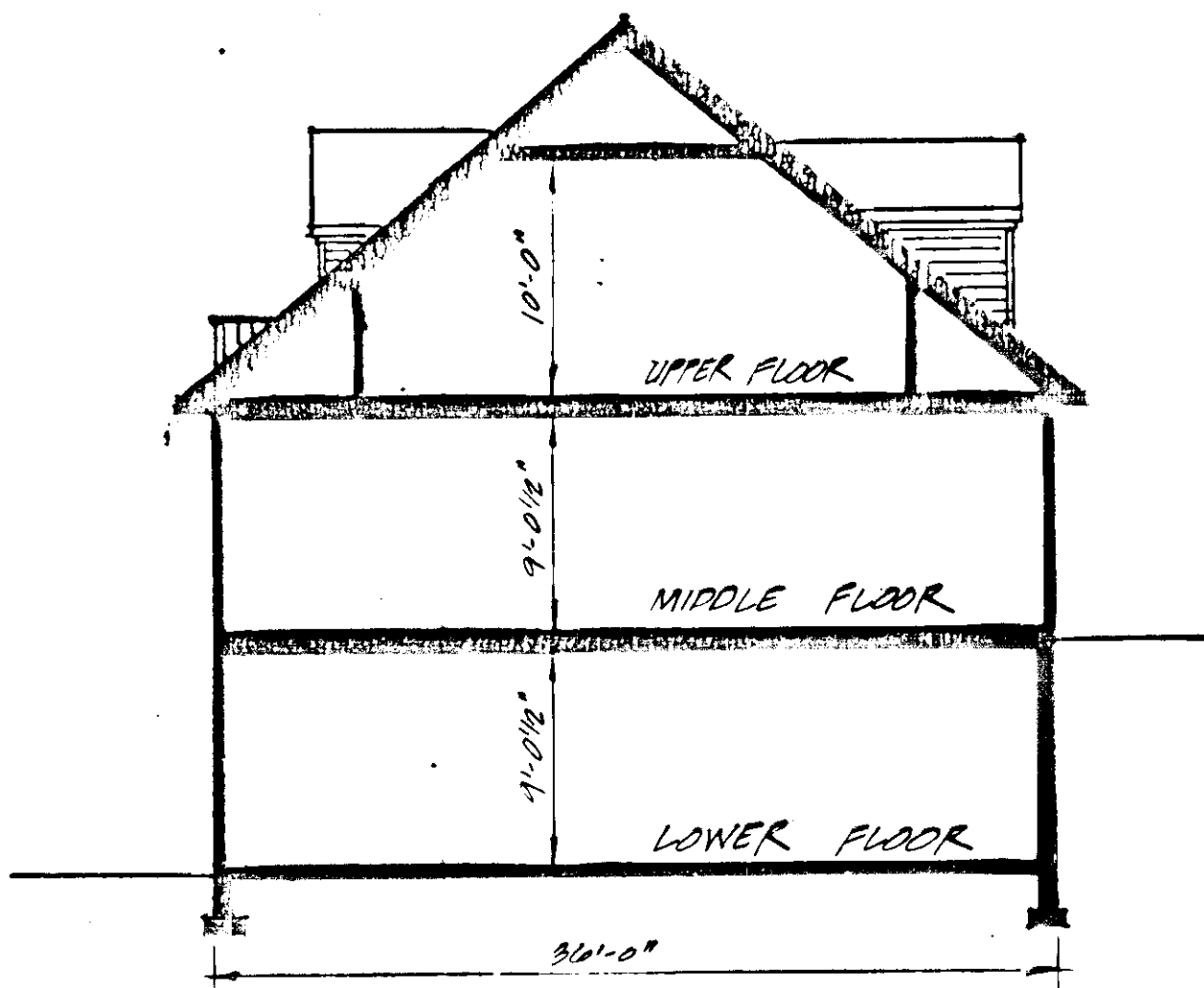
(A) ELEVATION
NO SCALE

DECLARANT: WYCLIFFE DEVELOPMENT COMPANY

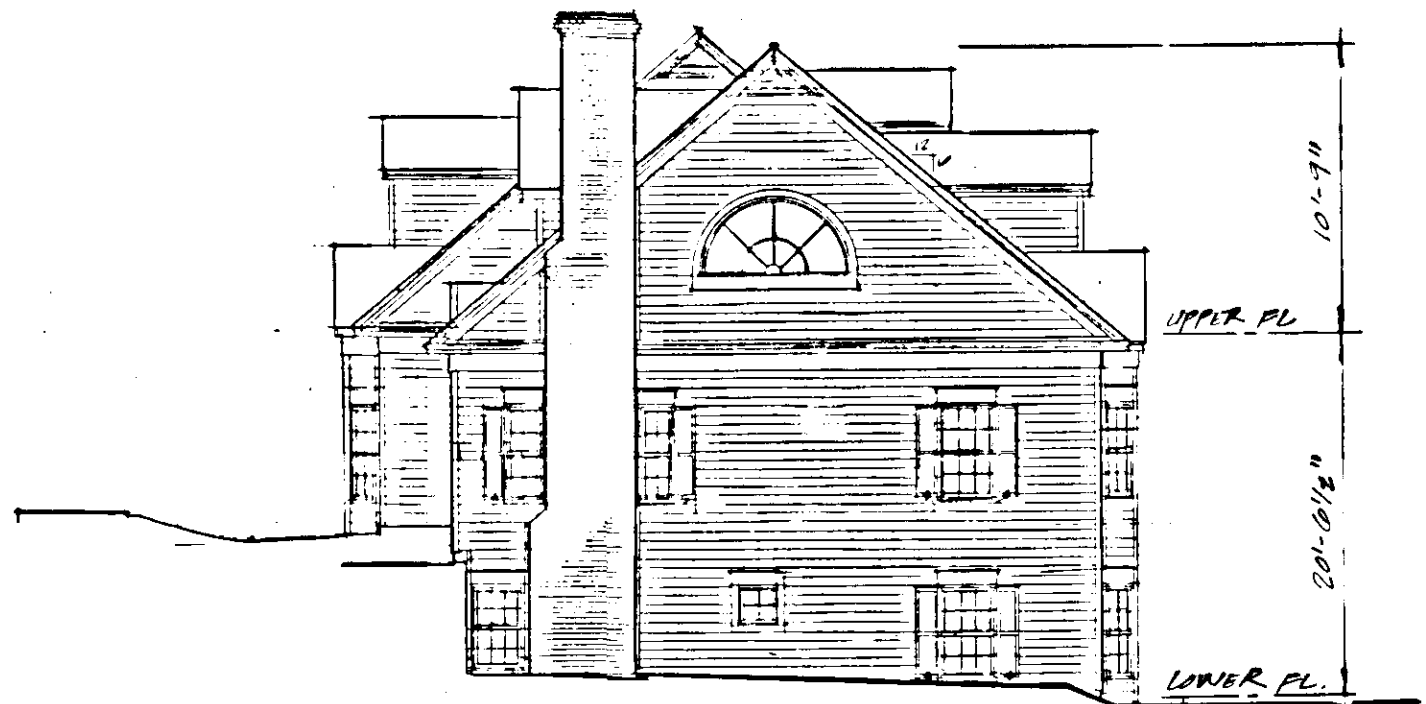


(B) ELEVATION
NO SCALE

PHASE II ELEVATIONS



SECTION
NO SCALE



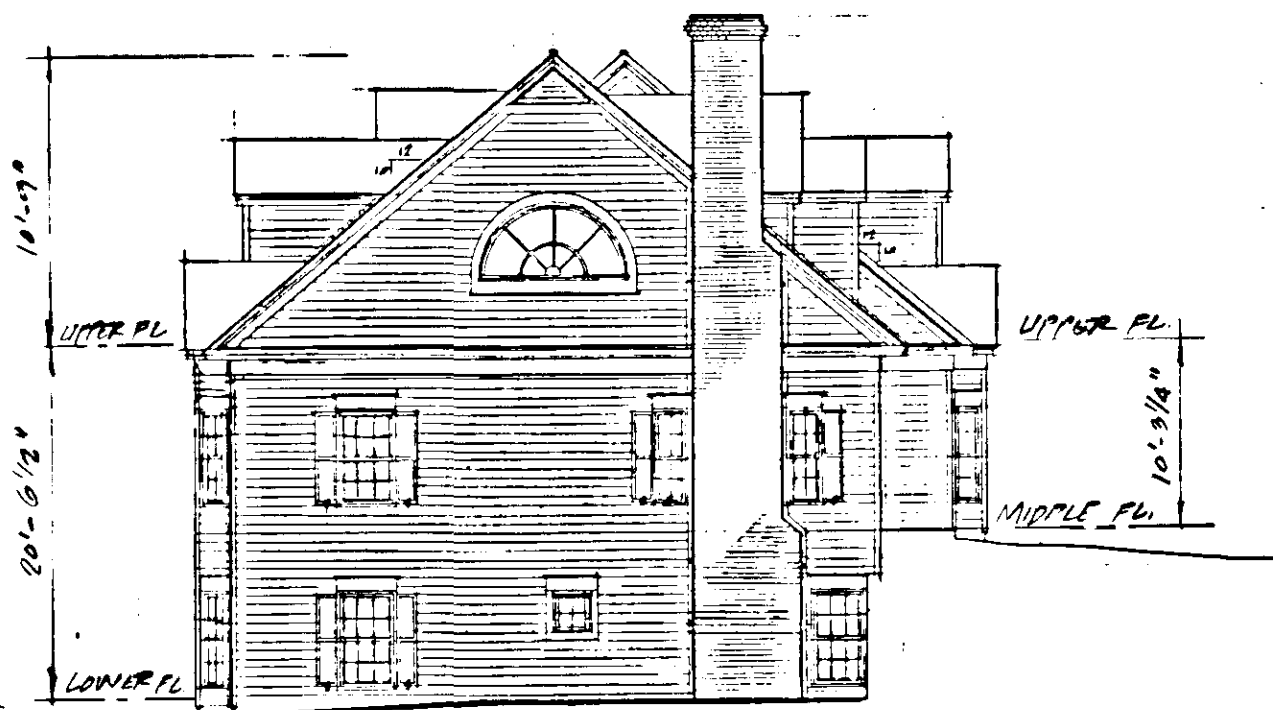
(C) ELEVATION
NO SCALE

ARCHITECT'S CERTIFICATE

I, **JOHN D. FULTON JR.**, A REGISTERED ARCHITECT IN THE COMMONWEALTH OF VIRGINIA HEREBY CERTIFY THAT THIS PLAN ACCURATELY SHOWS THE UNITS DELINEATED AND IN ALL RESPECTS COMPLIES WITH THE PROVISIONS OF SECTION 55-79.58 (b) OF THE VIRGINIA CONDOMINIUM ACT. I FURTHER CERTIFY THAT UNLESS NOTED OTHERWISE, ALL UNITS DEPICTED HEREON, WITHIN PHASE I OF BURWELL PLACE CONDOMINIUM, HAVE BEEN SUBSTANTIALLY COMPLETED.

GIVEN UNDER MY HAND THIS 7th DAY OF October, 1987.

John D. Fulton Jr.
REGISTERED ARCHITECT



(D) ELEVATION
NO SCALE

16 S. College Avenue
Salem, Virginia 24153
(703) 389-7323



- PLANNERS
- ARCHITECTS
- ENGINEERS
- SURVEYORS